

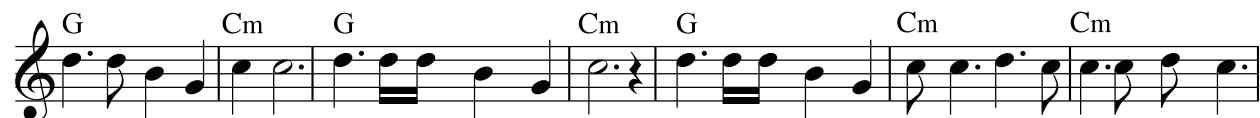
Nigel Gatherer's Scottish Collection

FEB
2

M

Montrose (Brian McNeill)

song



1. Father, father tell me, why do the horsemen ride? Why do the troopers look so grim by Jamie Graham's



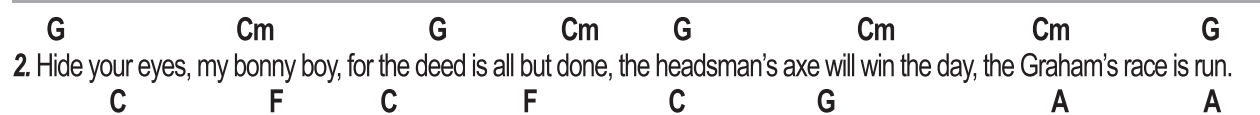
side? Is it true that he's a traitor? Father tell me why? There's no a man a-mong them a' will



look him in the eye— Ch. Montrose, Montrose, you were the rose, you gave your life for loy-al-ty;

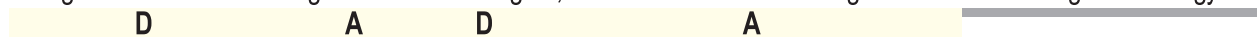


But it's no' the hour for a rose to flower, between the Kirk and Roy-al-ty, Mon-trose!



2. Hide your eyes, my bonny boy, for the deed is all but done, the headsman's axe will win the day, the Graham's race is run.

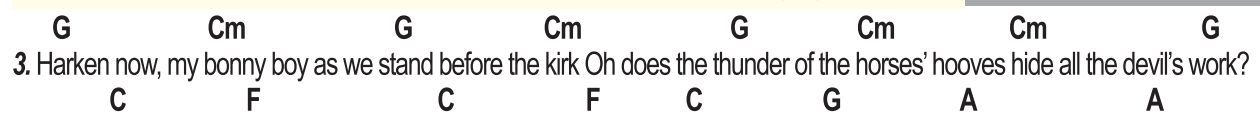
Though honor rode with courage but evil rode with guile, and the darkest horse among them all was the vengeance of Argyle.



CHORUS: Montrose, Montrose, you were the rose, you gave your life for loyalty;



But it's no' the hour for a rose to flower, between the Kirk and Royalty, Montrose!



3. Harken now, my bonny boy as we stand before the kirk Oh does the thunder of the horses' hooves hide all the devil's work?

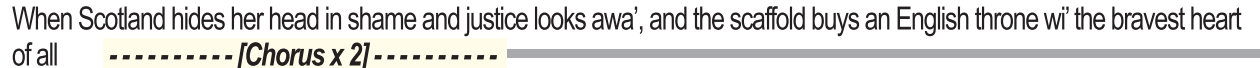
For the Covenant's a Campbell mare that rides across the law and there a Stuart bridles up, a Graham's heid must fa'.



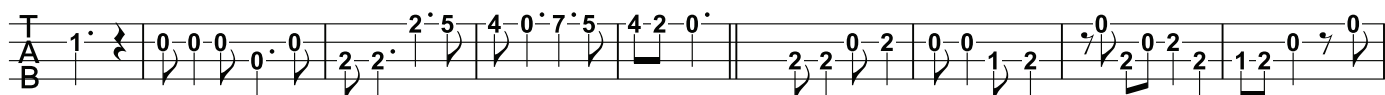
-----[Chorus]-----



4. I'll read you now the riddle by the shinin' o' the moon; when King and Kirk sit down to sup wha needs the longer spoon?



When Scotland hides her head in shame and justice looks awa', and the scaffold buys an English throne wi' the bravest heart of all -----[Chorus x 2]-----



FEB
2

1645

The Battle of Inverlochy

The Battle of Inverlochy was fought between Scottish Royalists under the command of James Graham, Marquess of Montrose, and Covenanter forces against Charles I's attempt to foist Episcopalianism on the Scots people. Montrose won the day, but in 1650 he was hanged in Edinburgh.



Montrose

Montrose (Brian McNeill)

song

The musical score for "Montrose" is presented in two systems. The first system consists of three staves, each with a guitar part (treble clef) and a corresponding ukulele part (treble clef). The guitar part uses a standard G-clef and the ukulele part uses a C-clef. The second system also consists of three staves, with the guitar part using a D-clef and the ukulele part using a C-clef. Chords are indicated above the guitar staves, and tablature is provided for the ukulele parts. The key signature is one flat (B-flat), and the time signature is 2/4.

Montrose-1

Fingerings for chords G, Cm, C, F, A, and D.

- G:** 1 (G4), 2 (B4), 3 (D5)
- Cm:** 3 (C4), 3 (E4), 3 (G4)
- C:** 3 (C4)
- F:** 2 (F4), 1 (A4)
- A:** 2 (A4), 1 (C5)
- D:** 2 (D4), 3 (F4), 4 (A4)