

Nigel Gatherer's Scottish Collection

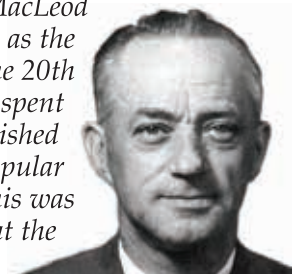
Rory MacLeod (PM Donald MacLeod)

pipe jig

Musical score for Mandolin, featuring a pipe jig by Rory MacLeod. The score is written in G major (one sharp) and 6/8 time. It consists of eight systems of music, each with a treble clef staff and a mandolin tablature staff. The tablature uses numbers 0-5 to represent frets and includes bar lines and repeat signs. Chord symbols are placed above the treble staff.

Chord symbols: A, D, A, F#m, Bm, E7, A, D, A, E7, A, A, A, A, Bm, A, A, E7, A, Bm, C#m, C#m, D, E7, A, D, C#m, Bm, Em, A7, D, C#m, Bm, E7, A.

Composed by Pipe Major Donald MacLeod (1917-1982), regarded by some as the greatest composer of pipe tunes in the 20th century. He was born in Lewis and spent a long career in the army. He published several collections of his hugely popular tunes throughout his lifetime. This was apparently the first tune he wrote, at the age of 14.



Rory MacLeod