

The **RAGTIME** Collection

Pig Ankle Rag (Maimie E Williams, 1905)

Musical score for Mandolin in G major, 4/4 time. The score consists of seven systems, each with a treble clef staff and a mandolin tablature staff. Chords are indicated above the treble staff.

System 1: Treble staff has notes G4, A4, B4, C5, B4, A4, G4. Chords: A, A, D, D. Tablature: 5 2 | 3 0 4 0 | 5 2 | 3 0 4 0 0 2 0 | 5 0 2 0 5 0 2 0 | 5 2 0 4

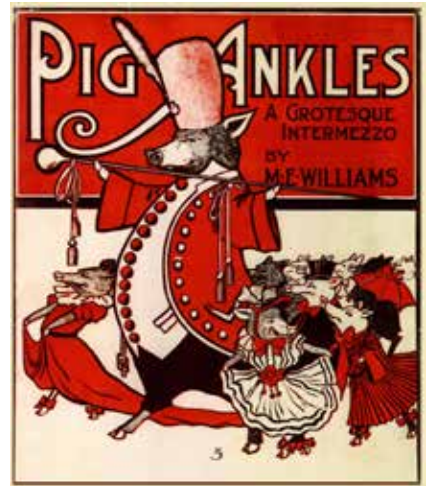
System 2: Treble staff has notes G4, A4, B4, C5, B4, A4, G4. Chords: A, A, D, D. Tablature: 5 2 | 3 0 4 0 | 5 2 | 3 0 4 0 0 2 0 | 5 0 2 0 5 0 2 0 | 5 0 2 5 4 5 0

System 3: Treble staff has notes G4, A4, B4, C5, B4, A4, G4. Chords: G, D, A, D, A. First ending: D. Second ending: D. Tablature: 2 5 0 | 2 5 5 7 5 2 | 5 | 0 4 0 5 2 5 0 4 | 5 5 4 | 5

System 4: Treble staff has notes G4, A4, B4, C5, B4, A4, G4. Chords: A, A, D, D. Tablature: 4 2 | 0 2 4 0 2 4 0 2 | 4 0 2 0 4 2 0 | 4 | 0 5 0 2 5 0 2 | 5 0 2 5 2 0 4

System 5: Treble staff has notes G4, A4, B4, C5, B4, A4, G4. Chords: A, A, D, D. Tablature: 0 2 4 0 2 4 0 2 | 4 0 2 0 4 2 0 | 4 | 0 5 0 2 5 0 2 | 5 0 2 5 4 5 0

System 6: Treble staff has notes G4, A4, B4, C5, B4, A4, G4. Chords: G, D, A, D, A, D. Tablature: 2 5 0 | 2 5 5 7 5 2 | 5 | 0 4 0 5 2 5 0 4 | 5



Pig Ankle Rag