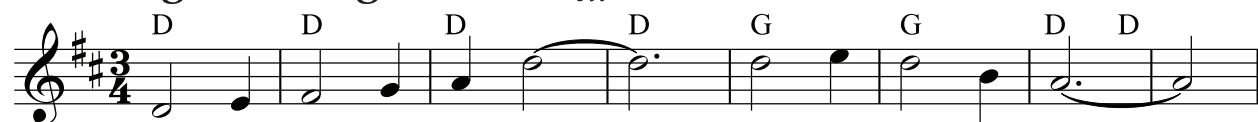


# Nigel Gatherer's Scottish Collection

## I Belong to Glasgow (Will Fyffe)

song air



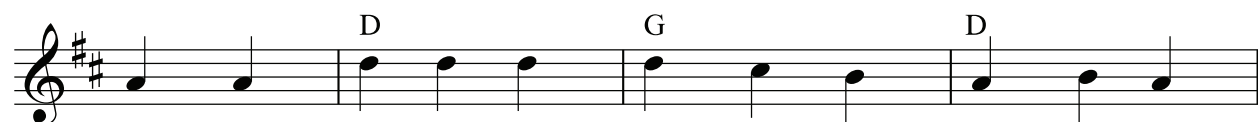
I be-long to Glas-gow, dear old Glas-gow toon;



But what's the mat-ter wi' Glas-gow for it's go-in' roond and roond.



I'm on-ly a com-mon old work-ing chap as an-y-one here can see,



But when I get a cou-ple of drinks on a



Sat-ur-day Glas-gow be-longs to me.



*I Belong to Glasgow*