

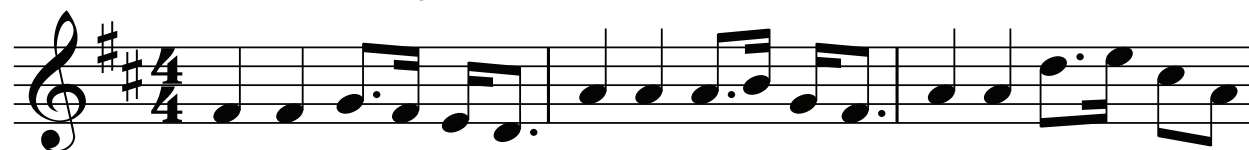
Crieff Community Band

4-9

whistle

slow air

Loch Katrine's Lady (Phil Cunningham)



F# F# G F#E D A A A B G F# A A Ḋ È C# A



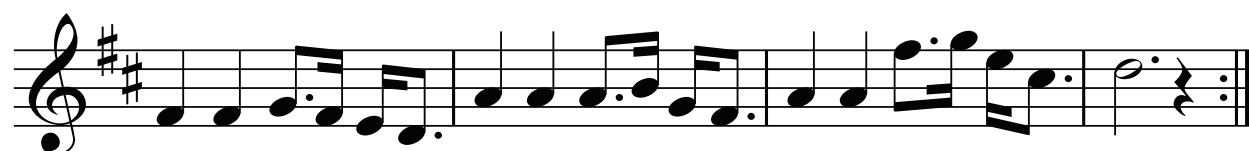
B A D E F# F# G F#E D A A A B G F#



A A F# G È C# Ḋ Ḋ Ḋ Ḋ È C# A



B B C# Ḋ C# B A A D G F#E D F#GE ADE



F# F# G F#E D A A A B G F# A A F# G È C# Ḋ



4-9: L Katrine's Lady

The title possibly refers to *The Lady of the Lake*, Sir Walter Scott's popular narrative poem published in 1810. Set in the Trossachs, much of the action takes place on an island in the middle of Loch Katrine known as "Ellen's Isle".