

Crieff Community Band

6-9
slow air

Bonny At Morn (traditional Northumbrian)

x3

Chord progressions for the first system: Em, Em, D, D.

Chord progressions for the second system: Em, C, D, Em.

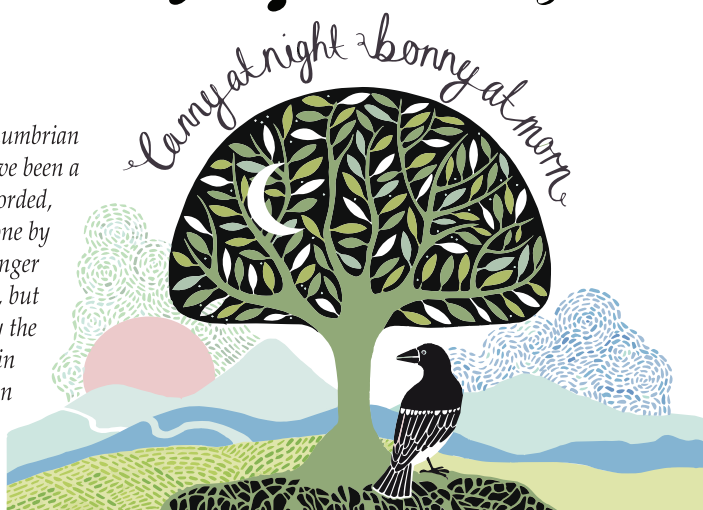
Chord progressions for the third system: Em, Em, D, D.

Chord progressions for the fourth system: Em, Em, Bm, Em.

Chord progressions for the fifth system: Em, Em, D.

Chord progressions for the sixth system: Em, C, Bm, Em.

This is a Northumbrian lullaby. There have been a few versions recorded, for example one by Tyneside singer Rachel Unthank, but they're mostly the same as found in the "Northumbrian Minstrelsy", published in 1882.



6-9: Bonny At Morn